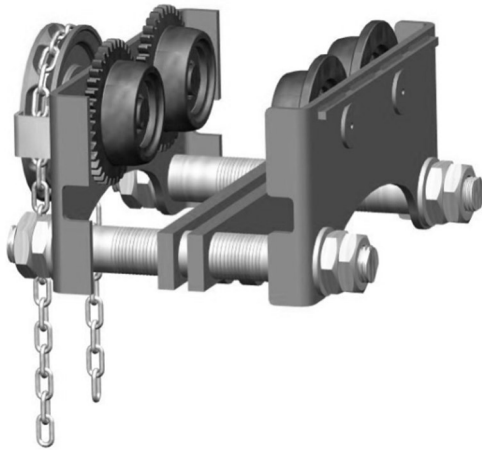
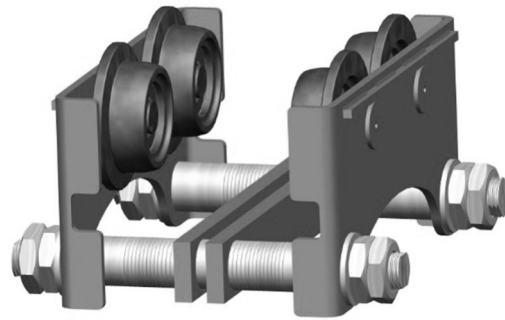




LOW HEADROOM GEARED TROLLEYS & LOW HEADROOM PLAIN TROLLEYS CAPACITIES: 0.5 TO 5 TONS



LOW HEADROOM GEARED TROLLEY



LOW HEADROOM PLAIN TROLLEY

WARNING

1. Please read user's manual carefully before start using the product.
2. Overloading is absolute prohibited.
3. Do Not cross or working under the lifting area.
4. You should stop operating immediately when the chain stuck or abnormal and effort of lifting a full load during the operation, Do Not keep on pulling the unit, check the loaded materiel to see if anything entangled with or any problem with the unit itself.
5. Do Not pull the different levels of hand-pulled chain with hand wheel to avoid chain sticking or vibrating.
6. Bearing, gears and rails should be lubricated periodically, check every single fixed parts thoroughly to make sure it's under working order.

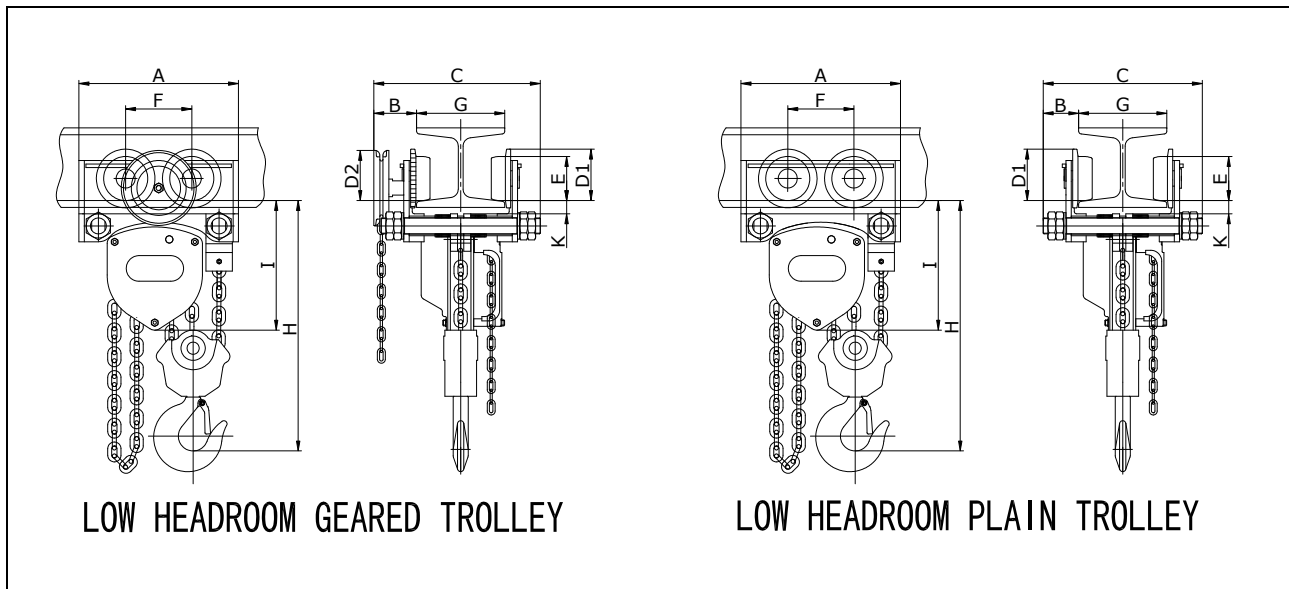
Application

The low headroom geared trolley is hand operated by pulling the hand-chain and the low headroom plain trolley by pushing the load lifted, running on the bottom flange of monorail.

Attach the chain block under the trolley to form a trolley type chain block, they may be mounted on monorail overhead conveying system with straight line or curve, hand travelling crane and jib crane. They are suitable for use widely in factories, mines, wharves, docks, warehouse and engine room for installation of equipment as well as for conveyance of goods. It is especially advantageous for use at the places where no power supply is available and for maintenance and repair of equipment.

Installation

1. To install the lifting, erect the both side wheels of lifting on the top of H-rails.
2. Make sure the quantities of bushes on both side's loading plates are equal.
3. Insert loading axle from the key way end into the hole of standard side plate.
4. Starting from thimble, loading board, thimble, and penetrate out trough from the other side of side plate.
5. Insert the stopper plate into loading axle, pivot the loading axle to correspond the flat washer in then tight the screw up.
6. Use the above method put the stopper plate into the other side nearest side plate's unit of loading axle.
7. Loading material with 20 Kg and move forward for 1 meter until the wheel contact with rail then tighten both side's screws, put the extra bushes as spare on the exposed loading axle.
8. When finished installation, start testing the light-load test and 125% overload test twice ($2L \leq 6m$), make sure it is working correctly.



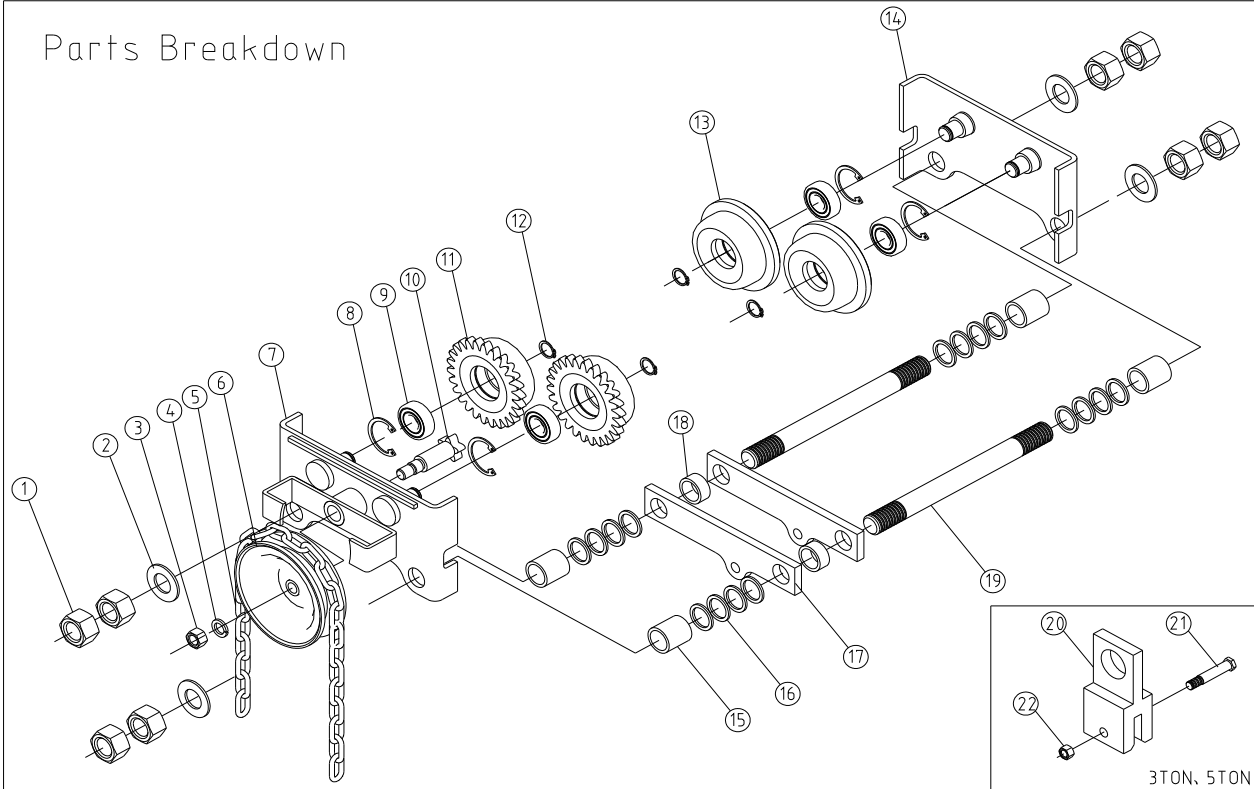
LOW HEADROOM GEARED TROLLEY & LOW HEADROOM PLAIN TROLLEY SPECIFICATIONS

Model		GT-050	PT-050	GT-100	PT-100	GT-150	PT-150	GT-200	PT-200	GT-300	PT-300	GT-500	PT-500
Rated capacity (t)		0.5		1		1.5		2		3		5	
Test load (t)		0.63		1.25		1.87		2.5		3.75		6.3	
Operating length of hand ain (m)		2.5		3		3		3		3		3	
Chain pull to lift full load (N)		40		40		50		70		100		180	
Min. radius of curve (m)		1		1		1.3		1.3		1.5		1.6	
H-beam recommended (G) (mm)		75~150		75~150		130~200		130~200		130~200		130~200	
Dimensions (mm)	A	210		240		319		321		323		362	
	B	80	45	83	58	90	72	90	65	94	72	97	81
	C	275	240	290	265	362	343	354	329	366	343	378	361
	D1	69		78		91		91		103		117	
	D2	71		81		108		108		105		114	
	E	60		70		80		80		90		100	
	F	91		100		116		116		130		150	
	H	247		260		335		328		448		533	
	I	182		197		233		262		233		294	
	K	20		20		26		26		26		30	

Remarks:

- (1) In addition to the standard lift, we accept orders of low headroom geared trolley with in 12m lift.
- (2) As our product is incessantly being improved and developed its construction may be slightly different from this instructions.

Parts Breakdown



No.	Description	Quantity	
		LOW HEADROOM GEARED TROLLEY	LOW HEADROOM PLAIN TROLLEY
1	Hex Nut	8	8
2	Washer	4	4
3	Hex Nut	1	0
4	Spring Washer	1	0
5	Hand Chain	1	0
6	Hand Wheel	1	0
7	Left Plate Ass'y	1	0
8	Circlips For Holes	4	4
9	Radial Ball Bearings	4	4
10	Actuate Shaft	1	0
11	Main wheel	2	0
12	Circlips For Shaft	4	4
13	Auxiliary Wheel	2	4
14	Right Plate Ass'y	1	2
15	Thimble	4	4
16	Spacer Washer	56/60	56/60
17	Connect plate	2	2
18	Thimble	1/2	1/2
19	Hex Bolt	2	2
20	Chain Linker(3T,5T)	1	1
21	Hex Bolt(3T,5T)	1	1
22	Hex Nut(3T,5T)	1	1

Serial No.

Inspection Certificate

It is hereby certified that this

product was manufactured

under our single-unit control of

quality and was passed in strict

inspection in accordance

with the inspection standard.

C. W. Hwang

Chief Inspector